



THE NEWSLETTER OF THE PCPV CHAPTER OF POCI
MAY / JUNE 2015



The Powers Co. of White River Junction, Vt., founded 50 years ago by Norman C. Powers, recently added a new Superior Pontiac Combination to their fleet. Shown at right is Norman P. Powers, grandson of the founder, with Bob Parks of Parks Superior Sales, West Springfield, Mass.



Leslie Long of Mars Hill, Maine, takes delivery of new Superior Pontiac Combination at Southern Division plant of Superior Coach Corp. in Kentucky, Missouri. Purchase was made through Superior Funeral Coach Sales, Inc., of Cambridge, Mass.



PCPV News
May/June 2015

Volume 18 ~ Number 3

**The Newsletter of the Pontiac
Commercial and Professional
Vehicle Chapter of POCI**

The **PCPV News** is published six times a year by the Pontiac Commercial and Professional Vehicle Chapter of the Pontiac-Oakland Club International (POCI), a nonprofit organization.

The PCPV Chapter (chapter #79, founded in 1998), is dedicated to the preservation, restoration, education and enjoyment of commercial and professional Pontiac, Oakland and GMC vehicles, past and present. These include: limousines, taxi cabs, hearses, police and fire cars, ambulances, sedan deliveries, station wagons, trucks, vans and SUVs. Pontiac and GMC produced military items and other special interest items are also included.

Dues are \$20 per year (U.S. funds, \$25 outside of U.S.); \$12 for electronic membership. We recommend membership in the Pontiac-Oakland Club International also - see **www.poci.org**.

Send change of address notices and article submissions to the *PCPV News* editor.

PCPV Officers

President

Michael Leonard
PO Box 14, Wood River, NE 68883
Phone (308) 391-3833
mchlleonard421@outlook.com

Vice-President

Gary Minor
357 Warwick Avenue
San Leandro, CA 94577
Phone: (510) 636-1951
mary.minor@sbcglobal.net

Secretary, Editor & Web Site Administrator

Paul Bergstrom
1165 County Road 83
Maple Plain, MN 55359
Phone: (763) 479-2248
pontiacpaulb@gmail.com

Treasurer

Terry Columbus
7516 Xerxes Avenue N.
Brooklyn Park, MN 55444
Phone: (763) 566-0293
terry1939@comcast.net

Deadlines for *PCPV News* articles/want ad submissions:

January/February issue: January 1st
March/April issue: March 1st
May/June issue: May 1st
July/August issue: July 1st
September/October issue: Sept. 1st
November/December issue: Nov. 1st



PRESIDENT'S MESSAGE

Hello Pontiac Enthusiasts,

So how is everyone's projects coming along? I've started working on my son's '72 Chevy Nova. We are going from a small block 350 to a big block 454. Some extreme changes involved!



Trying to get it road ready by the week of July 18. Then we will trailer it to San Diego to him. This will be a wedding present from me and his wife to be! Pontiacs seem to be on the back burner right now but hope to get time to work on the '63 Bonneville Consort this summer. I also have a pretty good sized garden, hoping it can survive our crazy weather. School's out for the summer here in Nebraska so many projects have started up. Had frost last week! Everybody take care and *see ya on the road less traveled.*

Happy Motoring,



*Michael Leonard
PCPV Chapter President*



DAYS GONE BY...

Vintage photos from POCI Founder, Don Bougher



According to Don's handwritten notes on the back of the photo, this **1940 Pontiac** hearse was for sale in San Bernadino, CA for \$1,400... in March of 1978!



This **1953 Pontiac** ambulance was available for sale in Minnesota, December 1993, for \$1,800. Looks like it was very restorable. I wonder if someone saved it?



**PONTIAC-OAKLAND
CLUB INTERNATIONAL**



Looking Out The Back Door

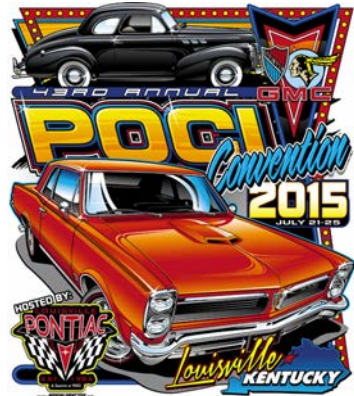
Soon we'll be Leavin' for Louisville.....

PCPV ANNUAL CHAPTER MEETING

Our annual meeting will be held on **Friday, July 24 from 10-11 a.m.** in the Perry Room in the Crowne Plaza (host hotel). If you are attending the convention, I hope you will be able to attend the meeting.

Until next issue,

Let's keep the Pontiac legacy alive....
Paul Bergstrom, Editor



2015 POCI Convention Louisville, KY

*Louisville Fair
and Expo Center*

July 21-25

On-line registration and activity sign up is available at poci.org. Check the poci.org website for activity sign-up and convention updates, or call the the POCI Club Office at (877) 368-3454.

If your PCPV Chapter dues are due, we have enclosed a renewal form inside this newsletter.

**THANKS FOR YOUR
CONTINUED SUPPORT!**



'59 PONTIAC FLOWER CAR



eBay
Watch



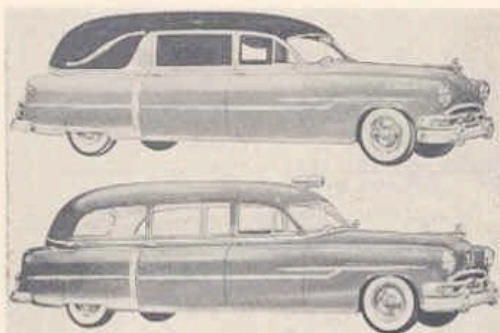
eBay description: CONQUEST/MADISON MODELS 1/43 scale white metal model. MIB. CONQUEST/MADISON is well known as a premier manufacturer of white metal model cars and trucks. The models are hand crafted from precision molds and individually finished. The models include chromed bright work, white wall tires as appropriate and simulated glass windows. This model is a 1959 Pontiac Catalina Funeral Flower car finished in black. FC 1.

Please be sure to visit us at route 66 model car store and see our ebay store for a fantastic collection of current and models from high-quality manufacturers.

Cool eh? Price = \$260, buy it now. eBay item # 161627475959

1953 PONTIACS BY SUPERIOR

Superior Introduces New Funeral Coaches on Pontiac Chassis



Top, Superior's new rear-loading Landulet on Pontiac chassis. Below, the new Superior-Pontiac ambulance.

viduals dying in military service. The gist of the sentence is that in the case of any individual dying outside of the forty-eight states and the District of Columbia after December 1950 and before July 1953, whose death occurred while in the active military service of the United States and whose body is returned back to any of such states or the District of Columbia (or to Alaska, Hawaii, Puerto Rico or the Virgin Islands) for interment or reinterment, the person or persons who shall have paid the expenses of burial of such deceased veteran, may obtain a lump sum death payment if an application for such is filed by or on behalf of such person before the expiration of two years after the date of such interment or reinterment.

In other words, the amendment merely extends the time for filing application for lump sum death payments with respect to the death of certain individuals dying in the military service, whose remains may either have been buried abroad and then sent home here for reinterment or whose remains are sent home immediately after death for interment. The two year limitation for the filing of an application begins after the date of such interment or reinterment, and not as in the old law where it was necessary to file the application within two years after the date of death of the insured individual.

See complete NFDA convention details on Pages 14 to 18. Better still—be there.

The southern division of the Superior Coach Corporation at Kosciusko, Miss., has recently announced a new line of funeral coaches to be engineered on Pontiac chassis. Production of the new cars will be in the newly constructed plant of the Superior Coach Corporation in the southern city.

Formal introduction of the new line of funeral coaches will be made at the NFDA convention in Washington, D.C., October 12 to 15.

According to the announcement and accompanying pictures received from the company, the new line of Pontiac coaches make a striking appearance. Said to be the result of several year's planning, the bodies are designed and engineered for heavy duty; doors, bodies and roof-panels are all stamped on Superior-built dies, and all are to be assembled in a new and modern plant.

To be offered in the new line will be a complete series of funeral coaches adapted to the requirements of the profession, and each model will feature distinctive and beautifully appointed interiors and exteriors, both as to colors and materials. Special emphasis has been placed by the company on its rear-loading Landulet which has been styled to give the funeral director the ultimate in funeral coach beauty.

Said to possess unusual versatility, the new Superior-Pontiac combination coach features ten reversible rollers mounted in the floor, two of them on the rear door sill for easy, convenient loading. Other features of the combination are quickly removable

drapes, snap-on carpet, decorative ambulance windows and large compartments for spare linen, and other equipment, needed for either funeral coach or ambulance operation.

Both the rear-loading coach and the combination offer a choice of blue, gray or burgundy, upholstery and trim, with linings of Landulet styling.

The company states that every feature of its new Superior-Pontiac ambulance has been designed to combine smart styling with the utmost operating efficiency. Its spacious, high-ceiling interior has headroom of 46 1/2 inches, providing ample height for transporting cardiac patients in a sitting position. Rear loading is simplified by a 22-inch loading height. Attendant's seats face each other and fold into the floor, permitting the transportation of an extra stretcher patient. Bright, cheerful interiors are upholstered in attractive, durable neoprene, in burgundy, blue, gray, green, orange and brown. Floors are covered with matching heavy grade linoleum. As with the rear-loading and combination coaches, the ambulance is available as a standard limousine or as a Landulet.

Completing the new line is the custom-built service car, a dignified precision-built coach which offers the funeral director an invaluable addition to his fleet at reasonable cost.

All the models in the new Superior-Pontiac line are built on a specially designed, heavy-duty, Pontiac 150-inch wheel base chassis, and they are powered by Pontiac's dependable 118 horsepower straight-eight engine. Pontiac's Dual-Range Hydra-matic transmission and power-steering will be available at extra cost.

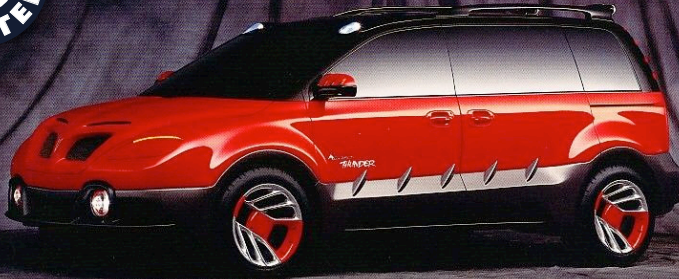


MIGHTY MONTANA



MONTANA

THUNDER



PONTIAC
DRIVING EXCITEMENT.

MONTANA

THUNDER

“The Montana Thunder is a cross-over vehicle: part sport utility, part minivan and all Pontiac. Sports-minded, young-at-heart Pontiac buyers demand and expect the kind of performance that comes from a Ram Air V6 engine, but the new generation of drivers demands and expects low emission levels. The Thunder delivers both.”

Roy S. Roberts
Vice President, General Motors Corporation
General Manager, Pontiac-GMC Division



QUICK FACTS

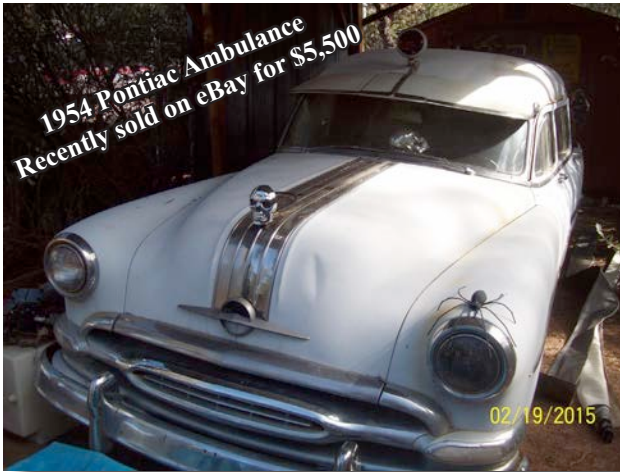
Wheelbase:	112 inches
Length:	182.1 inches
Front Track:	65.5 inches
Rear Track:	68.3 inches
Height:	65.2 inches
Total Width:	81 inches
Engine:	Ram Air 4.0 Liter 60" V6
Emissions:	Complies With 2003 ULEV Standards
Horsepower (Est.):	225
Torque (Est.):	235

INNOVATIONS

- Power Dual Sliding Doors
- Power Rear Liftgate Hatch
- Instrument Cluster Lighting
- Tilt Instrument Cluster
- High-Mounted Activity Lights
- Rack Access Lamps
- Integrated Flip-Down Trailer Hitch
- Integrated Dual Bike Rack
- Webbing in Seats

PONTIAC
DRIVING EXCITEMENT.

PONTIAC PRO-CAR MARKETPLACE

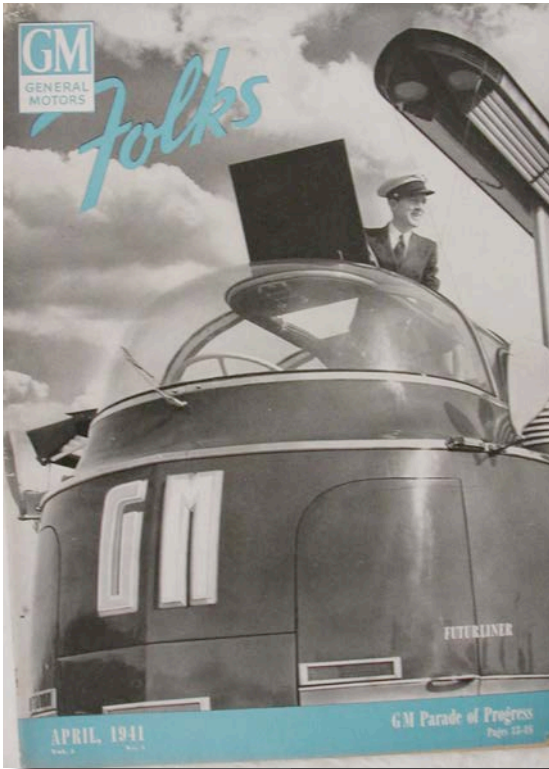


1971 Pontiac Hearse
1 OF 22 SUPERIOR COACH
LONG WHEEL BASE COMBOS
MADE FOR 71; 455 ENGINE

Sold for \$5,500 on eBay



PCPV POTPOURRI



FOR SALE



THE ABOVE HEARSE
will be available in approximately two months — 1940 Pontiac. Three-way load. Undercoated.

•

MITSON FUNERAL HOME
DUNDAS, ONT.



Pontiac Pro-Car in Action....

Share your PCPV-related photos, stories and vintage ads with the us! Items can be scanned and returned. Contact Paul B., editor.

PCPV POTPOURRI



EBAY WATCH



Superior- The Complete History

Wow, this eBay seller is asking a pretty penny for this book, see listing # 171826538617, it has a buy it now price of **\$450**. This is a great resource for tracking down the production numbers on Superior-built Pontiacs and there are hundreds of cool factory photos.

Gee, I'll sell you my copy for \$400!
- Editor



UPCOMING EVENTS

Route 66 Swap Meet and Show & Shine, Oct. 4, 2015 at the Route 66 Raceway, Joliet, IL for more details contact **Rodney Brockman** (815) 478-3633





PCPV Classified Ads

Parts For Sale

For sale: my collection of over 1,600 GM shop manuals, Motors, Chiltons, Mitchell Repair books 1960-2000. All in good condition. Great money maker for young vendor. \$3,500 you pick up. **Rodney Brockman**, 24862 Ridge, Elwood, IL 60421 (815)478-3633

Parts/Pontiacs Wanted

1951 Pontiac Sedan Delivery: 8 cyl., manual trans. I need dash components, exterior stainless, steering wheel and a radio. **Dennis Statz**, Sturgeon Bay, Wisconsin. Phone (920) 559-0561 or Romance@WhitelaceInn.com



Newsletter Contributions Wanted

Send photos, stories, want ads, restoration tips, or just drop a note to say hello. Tell us what's happening on the Pontiac/Oakland/GMC scene in your area!

**E-mail submissions to
pontiacpaulb@gmail.com**

Pontiacs For Sale



1956 Pontiac Hearse - Superior Body #7. Less motor & trans, needs restoration. Car has a solid body but does need front floors. Reduced to \$2,500



1964 Pontiac Bonneville Ambulance Good Solid Rust Free Body, No Engine, less front end sheet metal. Speedometer reads 59,962. \$1,500

East West Auto Parts

www.eastwestautoparts.com

(800) 447-2886



1949 Pontiac Sedan Delivery: 350/330 hp Chevy crate motor, Fat Man III front clip, 700 R4 trans, Ford 9" rear, dual exhaust, Vintage A/C & heat, new instruments, chrome tilt steering column with Billett Banjo steering wheel, much more. Asking \$26,500 **Gordon Garnett** (757) 838-1716, mgarnett1@cox.net (VA)

PONTIAC OWNER SERVICE POLICY



Parts/Pontiacs Wanted

Canadian Pontiacs and GMCs: wanted light-duty GMC sales brochures 1937-1958 showing panel trucks and sedan deliveries; Canadian Pontiac brochures 1937 - 1962; 2003 Vibe manuals and dealer literature. Contact **John Preikschat**, Phone (306) 771-2929 email: bigjohn@sasktel.net (M)

1956 Pontiac 3-seat wagon: need 3rd seat for pattern. Have 4 wagons with no rear seats! Chevy will also work. **Perry Eaton** (530) 534-5510 (CA)

Literature/info wanted - for '66 Bonneville Superior Embassy limousine. Contact **Joe Sharpnack** (402) 789-3015 (NE)

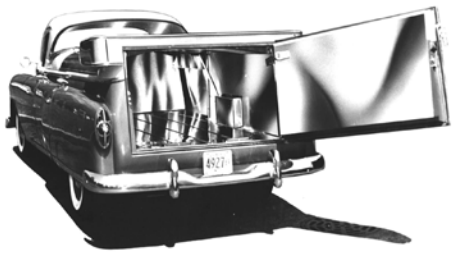
1962 Superior Criterion Ambulance: 15" Deluxe wheel covers, '62-era Superior Coachworks assembly manuals or photos to help with restoration. **Matt Planning** (262) 646-3363 matthew@brewcityengineering.com (WI)

Wanted: any literature for the 1955-56-57 Pontiac Sedan Delivery. **Rodney Brockman**, 24862 Ridge Road, Elwood, IL 60421



Restoration Tips

1926-1958 Pontiac parts: Free parts catalog available from California Pontiac Restoration. Contact **Richard Plastino**, (714) 245-9800 email rich@pontiacparts.net, mailing address: 820 Poinsettia Street, Santa Ana, CA 92701



PCPV News
Classified Ad Rates:
(for 6 issues)

- \$200 full page
- \$100 half page
- \$50 quarter page
- \$25 business card size

POCI New Membership Form:

Year _____ Style Name/Number _____ No. Cylinders _____

Year _____ Style Name/Number _____ No. Cylinders _____

Year _____ Style Name/Number _____ No. Cylinders _____

Owner: _____

Associate Member(s) _____

Address: _____

City: _____ State: _____ ZIP+4 _____

Country _____ Phone: () _____

Email: _____ Referred By (Name & Member#): _____

Pontiac Oakland GMC

Annual Membership

Worldwide E-Membership	\$25.00
U.S. (Includes 2 Associates)	\$39.00
Canada (Includes 2 Associates)	\$40.00
Foreign (Includes 2 Associates)	\$49.00
Associate Membership (All)	\$2.00/each

Bill My: Visa Mastercard
 Discover

Card Number: _____

Expiration: _____ Security Code: _____

Signature: _____

RECRUIT A NEW MEMBER!

PCPV Chapter Membership Form

___ NEW MEMBER ___ RENEWAL

POCI Membership # _____ (if applicable)

Annual Dues = \$20.00 Outside of U.S. = \$25.00

Electronic Membership = \$12.00 (newsletter received via email)

NAME: _____

ADDRESS: _____

CITY: _____ STATE/PROV. _____

ZIP/POSTAL CODE: _____ PHONE: _____

email: _____

Vehicles owned: _____

Send check or money order made out to:
PCPV Chapter of POCI, c/o Terry Columbus
7516 Xerxes Avenue N.
Brooklyn Park, MN 55444



PCPV Chapter of POCI

c/o Paul Bergstrom, Editor
1165 County Road 83
Maple Plain, MN 55359

**PONTIAC COMMERCIAL AND
PROFESSIONAL VEHICLE CHAPTER**

PONTIAC-OAKLAND CLUB INTL.



2015 POCI Convention
Louisville, Kentucky
July 21-25, 2015